



Artisan Scientific

QUALITY INSTRUMENTATION ... GUARANTEED

Looking for more information?

Visit us on the web at <http://www.artisan-scientific.com> for more information:

- Price Quotations
- Drivers
- Technical Specifications, Manuals and Documentation

Artisan Scientific is Your Source for Quality New and Certified-Used/Pre-owned Equipment

- Tens of Thousands of In-Stock Items
- Hundreds of Manufacturers Supported
- Fast Shipping and Delivery
- Leasing / Monthly Rentals
- Equipment Demos
- Consignment

Service Center Repairs

Experienced Engineers and Technicians on staff in our State-of-the-art Full-Service In-House Service Center Facility

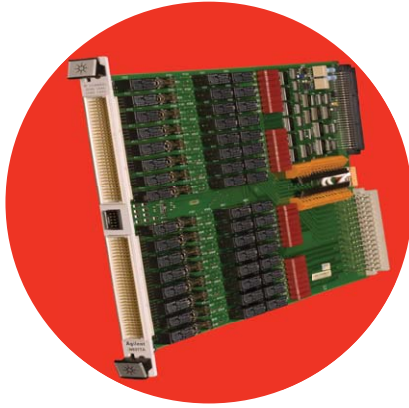
InstraView™ Remote Inspection

Remotely inspect equipment before purchasing with our Innovative InstraView™ website at <http://www.instraview.com>

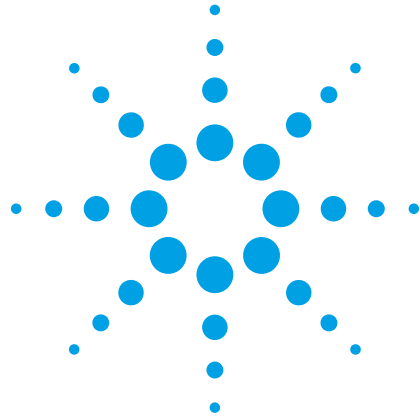
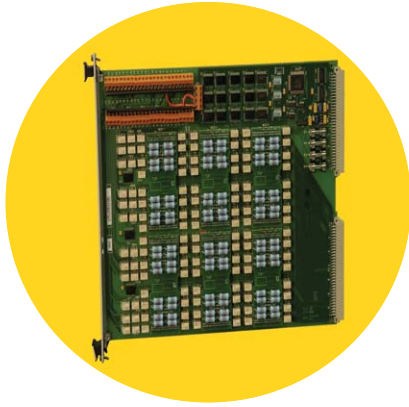
We buy used equipment! We also offer credit for Buy-Backs and Trade-Ins

Sell your excess, underutilized, and idle used equipment. Contact one of our Customer Service Representatives today!

Talk to a live person: 888-88-SOURCE (888-887-6872) | Contact us by email: sales@artisan-scientific.com | Visit our website: <http://www.artisan-scientific.com>



Agilent TS-5000 Family Multi-Channel Loadcards



Data Sheet



Figures 1, 2 and 3 below exhibit circuit diagrams on how single, dual and quad-load loadcards function respectively.

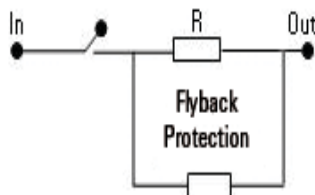


Figure 1. Single-load

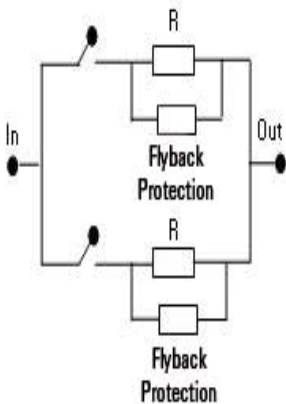


Figure 2. Dual-load

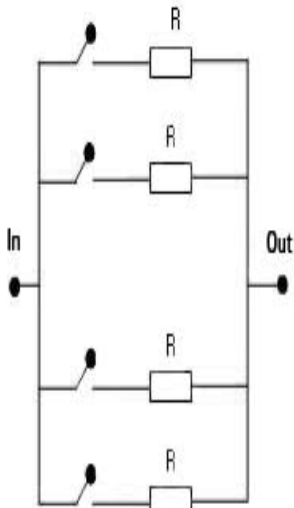


Figure 3. Quad-load

Agilent Technologies' TS-5000 family loadcards are a cost-effective and reliable set of multi-channelled loadcards designed specifically for automotive functional testing.

It offers a wide range of loadcards with up to 48 addressable channels, covering from low resistance to high current. The high current loadcards offer flyback protection while utilizing reliable reed relays with power bus to supply power to load.

The TS-5000 family offers single, dual and quad-load loadcards, each allowing you to connect to internal and externally defined load values. The multiple types of loadcards offered are categorized as follows:

Single-Load Loadcards

- E6175A: 8-channel, single-load
- E6176A: 16-channel, single-load
- E6177A: 24-channel, single-load
- E6178B: 8-channel, single-load

Dual-Load Loadcards

- N9377A: 16-channel, dual-load
- N9379A: 48-channel, dual-load

Quad-Load Loadcard

- N9378A: 24-channel, quad-load

The TS-5000 family loadcards work well with Agilent E6198 programmable Switch/Load Unit (SLU), with up to 21 slots of optional Agilent plug in cards. This programmable SLU can also be used for instrumentation switching, as well as switching power supply and loads to the electronic control module (ECM).

With the TS-5000 family loadcards, your test engineers can choose their own load devices for any specific testing requirement that they may have.

A flexibility like this allows the application of loads that are more than just resistors, for example, reactive loads with inductors or capacitors can also be fitted for an ECM application that requires emulation. The TS-5000 family loadcards also have the ability to provide flyback protection for high current handling.

General Specifications

Agilent Loadcards Specifications

Function	E6175A	E6176A	E6177A	E6178B	N9377A	N9378A	N9379A
Number of channels (maximum)	8	16	24	8	16, dual-load	24, quad-load	48, dual-load
Number of channels - unshared relays	4	16	24	8	16	24	48
Maximum current per channel	7.5 A (15 A peak)	7.5 A (15 A peak)	3 A	30 A	7.5 A (15 A peak)	2 A	2 A
Current measuring with sense resistor	Yes	Yes	No	No	Yes	No	No
Current measuring with current transducer	Yes	No	No	Yes	No	No	No
Flyback protection available (user installed)	Yes	Yes	No	Yes	Yes	No	No
Engineered for application	Inductive load	Common load	Low current	High current	High current dual-load	Low current quad-load	Low current quad-load

Switching Specifications

Agilent Single-Load Loadcards Specifications

Function	E6175A	E6176A	E6177A	E6178B
Path resistance from power bus to loadcard connect	0.25 Ω maximum	0.4 Ω maximum	0.5 Ω maximum	0.030 Ω typical, 0.075 Ω maximum
Load path relay operate/release time	10/8 msec typical, 16/10 msec maximum, 30 cps maximum	10/8 msec typical, 16/10 msec maximum, 30 cps maximum	3.3/2.4 msec typical, 8/8 msec maximum, 10 cps maximum	15/10 msec typical, 20 cps maximum without load, 6 cpm maximum with rated load
Peak voltage to earth	60 V continuous 500 V maximum transient, non-switching (delays to < 60 V in 200 mS)	60 V continuous 500 V maximum transient, non-switching (delays to < 60 V in 200 mS)	60 V continuous 500 V maximum transient, non-switching (delays to < 60 V in 200 mS)	60 V continuous
Load carry/switching current (per channel)	7.5 A maximum non-switching, continuous	7.5 A maximum non-switching, continuous	3 A maximum	30 A maximum ⁽¹⁾
Load carry peak current (non-switching)	15 A maximum, (< 100 msec, < 2% duty cycle)	15 A maximum, (< 100 msec, < 2% duty cycle)	6 A maximum, (< 100 msec, < 2% duty cycle)	200 A maximum, (< 100 mS, < 2% duty cycle ⁽¹⁾)
Load switching power	150 W maximum, resistive load	150 W maximum, resistive load	60 W maximum, resistive load	500 W maximum @ 25 Vdc maximum resistive load; 100 W maximum @ 40 Vdc maximum resistive load
Load switching voltage	60 V maximum	60 V maximum	60 V maximum	40 V maximum, V*I not to exceed load switching power ⁽²⁾
Minimum permissible load	1 mA, 1 V	1 mA, 1 V	10 μ A, 10 mV DC	N/A
Basic current sense accuracy with standard 0.05 W sense resistor	0.1% maximum	0.1% maximum	0.1% maximum	0.1% maximum

(1) One channel at a time. Special accessories required to support multi-channel 30 A load switching at any one time.

(2) Exclusive of load

Agilent Multi-Load Loadcards Specifications

Function	N9377A	N9378A	N9379A
Switch topology	16-channel / 2 loads per channel, off-board loads	24-channel / 4 loads per channel with common, on-board loads	48-channel / 2 loads per channel with common, on-board loads
Path resistance channel to common	N/A	0.130 Ω maximum	0.300 Ω maximum
Path resistance from power bus to loadcard connect	0.4 Ω maximum	0.5 Ω maximum	0.5 Ω maximum
Load path relay operate/release time	10/5 msec maximum, 30 cps maximum	4/4 msec maximum, 10 cps maximum	4/4 msec max, 10 cps maximum
Peak voltage to earth	60 V continuous 500 V maximum transient, non-switching (delays to < 60 V in 200 mS)	60 V continuous 500 V maximum transient, non-switching (delays to < 60 V in 200 mS)	60 V continuous 200 V maximum transient, non-switching (delays to < 60 V in 200 mS)
Load carry/switching current (per channel)	7.5 A maximum non-switching, continuous	2 A maximum	2 A maximum
Load carry peak current	15 A maximum, non-switching (< 100 msec, < 2% duty cycle)	1 A maximum	1 A maximum
Load switching power	150 W maximum, resistive load	N/A	N/A
Load switching voltage	60 V maximum	30 V maximum (relay switching)	30 V maximum (relay switching)
Minimum permissible load	10 mA, 5 V	10 μ A, 10 mV DC	10 μ A, 10 mV DC
Basic current sense accuracy with standard 0.05 Ω sense resistor	0.1% maximum	N/A	N/A
Basic current sense accuracy with different amplifier engaged ($V_{cm} = 0$ V)	0.2% + 30 mA	N/A	N/A
Basic current sense accuracy with different amplifier engaged ($V_{cm} = 16$ V)	0.2% + 100 mA	N/A	N/A
Isense differential amplifier 3 dB bandwidth	500 kHz typical	N/A	N/A
Isense differential amplifier slew rate	40 A/ μ S typical	N/A	N/A
Power dissipation, individual load mounted on loadcard	N/A	2 W maximum, each load	2 W maximum, each load
Average power for loads mounted on loadcard	N/A	20 W maximum total, per card	20 W maximum total, per card

(1) One channel at a time. Special accessories required to support multi-channel 30 A load switching at any one time.

(2) Exclusive of load

Safety & CE Compliance

Safety	IEC 61010-1 (1990)+A2: 1995/EN61010-1 : 1993+A2 : 1995 CSA C22.2 #1010.1 (1992) UL 3111
EMC	CISPR 11: 1990/EN55011 1991: Group1, Class A EN50082-1: 1992 IEC 61000-4-2: 1995/: 4kV CD IEC 61000-4-3: 1995/: 3V/m IEC 61000-4-4: 1995/: 1kV power line



Agilent Email Updates

www.agilent.com/find/emailupdates

Get the latest information on the products and applications you select.

Remove all doubt

Our repair and calibration services will get your equipment back to you, performing like new, when promised. You will get full value out of your Agilent equipment throughout its lifetime. Your equipment will be serviced by Agilent-trained technicians using the latest factory calibration procedures, automated repair diagnostics and genuine parts. You will always have the utmost confidence in your measurements.

Agilent offers a wide range of additional expert test and measurement services for your equipment, including initial start-up assistance, onsite education and training, as well as design, system integration, and project management.

For more information on repair and calibration services, go to:

www.agilent.com/find/removealldoubt

www.agilent.com

For more information on Agilent Technologies' products, applications or services, please contact your local Agilent office. The complete list is available at:

www.agilent.com/find/contactus

Americas

Canada	(877) 894-4414
Latin America	305 269 7500
United States	(800) 829-4444

Asia Pacific

Australia	1 800 629 485
China	800 810 0189
Hong Kong	800 938 693
India	1 800 112 929
Japan	0120 (421) 345
Korea	080 769 0800
Malaysia	1 800 888 848
Singapore	1 800 375 8100
Taiwan	0800 047 866
Thailand	1 800 226 008

Europe & Middle East

Austria	0820 87 44 11
Belgium	32 (0) 2 404 93 40
Denmark	45 70 13 15 15
Finland	358 (0) 10 855 2100
France	0825 010 700* *0.125 € fixed network rates
Germany	01805 24 6333** **0.14 €/minute
Ireland	1890 924 204
Israel	972-3-9288-504/544
Italy	39 02 92 60 8484
Netherlands	31 (0) 20 547 2111
Spain	34 (91) 631 3300
Sweden	0200-88 22 55
Switzerland	(French) 44 (21) 8113811 (Opt 2)
Switzerland	(German) 0800 80 53 53 (Opt 1)
United Kingdom	44 (0) 118 9276201

Other European countries:
www.agilent.com/find/contactus

Revised: October 24, 2007

Product specifications and descriptions in this document subject to change without notice.

© Agilent Technologies, Inc. 2007
Printed in USA, December 12, 2007
5989-5822EN



Agilent Technologies



Artisan Scientific

QUALITY INSTRUMENTATION ... GUARANTEED

Looking for more information?

Visit us on the web at <http://www.artisan-scientific.com> for more information:

- Price Quotations
- Drivers
- Technical Specifications, Manuals and Documentation

Artisan Scientific is Your Source for Quality New and Certified-Used/Pre-owned Equipment

- Tens of Thousands of In-Stock Items
- Hundreds of Manufacturers Supported
- Fast Shipping and Delivery
- Leasing / Monthly Rentals
- Equipment Demos
- Consignment

Service Center Repairs

Experienced Engineers and Technicians on staff in our State-of-the-art Full-Service In-House Service Center Facility

InstraView™ Remote Inspection

Remotely inspect equipment before purchasing with our Innovative InstraView™ website at <http://www.instraview.com>

We buy used equipment! We also offer credit for Buy-Backs and Trade-Ins

Sell your excess, underutilized, and idle used equipment. Contact one of our Customer Service Representatives today!

Talk to a live person: 888-88-SOURCE (888-887-6872) | Contact us by email: sales@artisan-scientific.com | Visit our website: <http://www.artisan-scientific.com>